

LED COMPONENT & INDICATOR GUIDE

Plus Opto is home to the complete range of optoelectronic devices: LED discrete components & assemblies including through hole LED lamps, surface mount LED's, LED modules and Panel Mount LED lamps. We also offer a custom and semi-custom service along with a range of drivers & controllers.

Panel Mount LED lamps generic features include high intensity colours, wide range of operating voltage options, (including a bi-polar range), high quality materials and ruggedised construction methods to ensure reliability for a wide range of demanding applications.

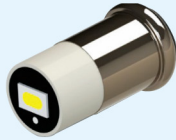
They are ideal for professional applications, including defence, aerospace, rail and specialised industrial markets, such as processing and automation plant, fire and security and mobile equipment.





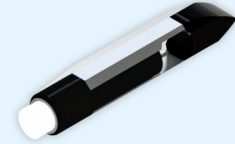
235 SERIES

- T1¾ midget groove S5.7s
- Range of LED colours
- Surface mount LED technology
- Wide viewing angle for switches
- Internal resistor - voltage options
- Bi-polar AC/DC termination
- Durable to shock and vibration



236 SERIES

- T1¾ midget flange SX6s
- Range of LED colours
- Surface mount LED technology
- Wide viewing angle for switches
- Internal resistor - voltage options
- Bi-polar AC/DC termination
- Durable to shock and vibration



258 SERIES

- T6.8 slide base
- Range of LED colours
- High intensity LEDs, flat topped
- Wide viewing angle
- Voltage input: 8 - 48Vac/DC
- Bi-polar termination
- Durable to shock and vibration

SEALED LED PANEL INDICATORS



508 SERIES

- Ø8.1mm mounting
- Bright nickel plated brass housing
- Smoked lens - good on/off ratio
- High intensity LED colours
- Internal resistor - voltage options
- Sealed to IP67 - weatherproof
- Durable to shock and vibration



512 SERIES

- Ø12.7mm (½") mounting
- Bright nickel plated brass housing
- Smoked lens - good on/off ratio
- High intensity LED colours
- Internal resistor - voltage options
- Sealed to IP67 - weatherproof
- Durable to shock and vibration



514 SERIES

- Ø12.7mm (½") mounting
- Bright nickel plated brass housing
- Raised coloured diffused lens
- Range of LED colours
- Internal resistor - voltage options
- Sealed to IP67 - weatherproof
- Durable to shock and vibration



520 SERIES

- Ø6.1mm countersunk mounting
- Robust stainless steel housing
- Coloured diffused lens
- High intensity LED colours
- Internal resistor - voltage options
- Sealed to IP67 - weatherproof
- Durable to shock and vibration



524 SERIES

- Ø8.1mm mounting
- Robust stainless steel housing
- Coloured diffused lens
- High intensity LED colours
- Internal resistor - voltage options
- Sealed to IP67 - weatherproof
- Durable to shock and vibration



525 SERIES

- Ø8.1mm mounting
- Bright nickel plated brass housing
- White lens - good on/off ratio
- Multi LED colours - single indicator
- Input 12Vdc - 4 wire termination
- Sealed to IP67 - weatherproof
- Durable to shock and vibration



528 SERIES

- Ø12.7mm (½") mounting
- Robust stainless steel housing
- Coloured diffused lens
- High intensity LED colours
- Internal resistor - voltage options
- Sealed to IP67 - weatherproof
- Durable to shock and vibration



531 SERIES

- Ø12.7mm (½") mounting
- Bright nickel plated brass housing
- Coloured diffused lens
- High intensity LED colours
- Bi-polar AC/DC - voltage options
- Sealed to IP67 - weatherproof
- Durable to shock and vibration



534 SERIES

- Ø8.1mm mounting
- Robust stainless steel housing
- Coloured diffused lens
- High intensity LED colours
- Bi-polar AC/DC - voltage options
- Sealed to IP67 - weatherproof
- Durable to shock and vibration



SEALED LED PANEL INDICATORS (CONT'D)



604 SERIES

- Ø5.0mm mounting
- Bright nickel plated brass housing
- Smoked lens - good on/off ratio
- High intensity LED colours
- Voltage options - wire termination
- Sealed to IP67 - weatherproof
- Durable to shock and vibration



612 SERIES

- Ø6.35mm (¼") mounting
- Black anodised aluminium housing
- Smoked lens - good on/off ratio
- High intensity LED colours
- Internal resistor - voltage options
- Sealed to IP67 - weatherproof
- Durable to shock and vibration



665 SERIES

- Ø8.5mm mounting
- Hard anodised aluminium housing
- Unique PTFE panel seal
- High intensity LED colours
- 20mA operation - wire termination
- Sealed to IP68-10psi weatherproof
- Durable to harsh environments



671 SERIES

- Ø25.4mm (1") mounting
- Black anodised aluminium housing
- Raised diffused lens
- High intensity LED colours
- High voltage 24Vac/DC - 440Vac/DC
- Sealed to IP67 - weatherproof
- Durable to shock and vibration



677 SERIES

- Ø8.1mm mounting
- Black anodised aluminium housing
- Smoked lens - good on/off Ratio
- High intensity LED colours
- Internal resistor - voltage options
- Sealed to IP67 - weatherproof
- Durable to shock and vibration



690 SERIES

- Ø9.6mm (⅜") mounting
- Black anodised aluminium housing
- UL certified - No: E349017
- High intensity LED colours
- Voltage input: 8-48Vac/DC bi-polar
- Sealed to IP67 - weatherproof
- Durable to shock and vibration



696 SERIES

- Ø6.1mm countersunk mounting
- Black anodised aluminium housing
- Coloured diffused lens
- High intensity LED colours
- Internal resistor - voltage options
- Sealed to IP67 - weatherproof
- Durable to shock and vibration



698 SERIES

- Ø8.1mm mounting
- Black anodised aluminium housing
- Smoked lens - good on/off Ratio
- High intensity LED colours
- Bi-polar AC/DC - voltage options
- Sealed to IP67 - weatherproof
- Durable to shock and vibration



699 SERIES

- Ø12.7mm (½") mounting
- Black anodised aluminium housing
- Coloured diffused lens
- High intensity LED colours
- Bi-polar AC/DC - voltage options
- Sealed to IP67 - weatherproof
- Durable to shock and vibration